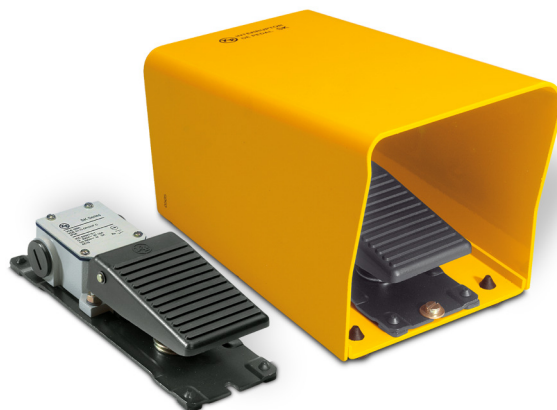
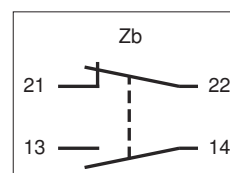


- High resistance metal enclosure
- Ideal for heavy duty harsh environmental
- Degree of Protection IP66 (IEC 60529)
- Double break circuit with 1NO+1NC
- Double Gap contacts
- Positive opening of the NC contact (→) (IEC 60947-5-1)
- Long electrical and mechanical life
- Fool proof protection cover
- Cable entrances with Pg11 thread
- Rubber feet against sliding



Circuitry

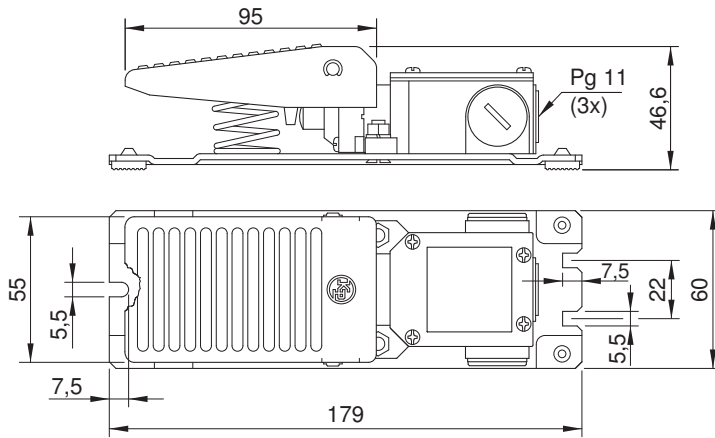


Specifications

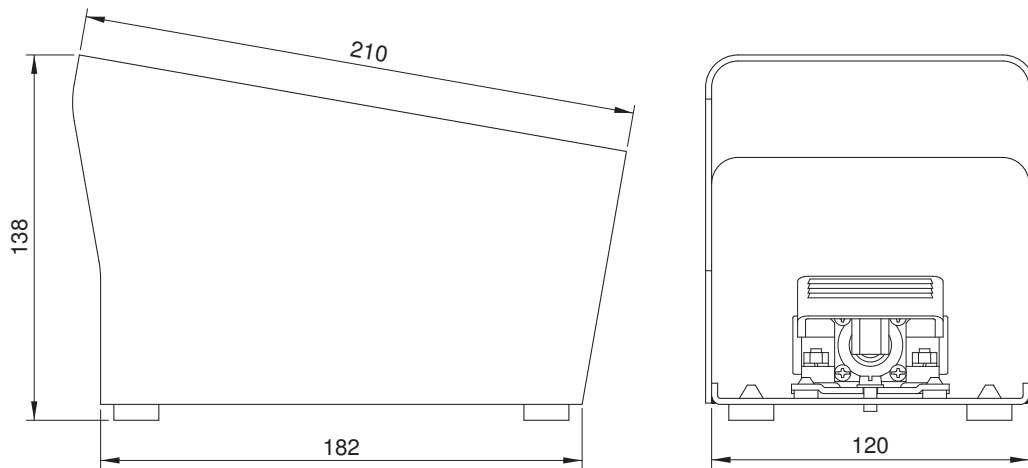
Utilization Category (IEC 60947-5-1)	AC-15	DC-13
Rated Operational Voltage (Ue)	400 V	125 V
Rated Operational Current (Ie)	3 A	1,1 A
Rated Insulation Voltage (Ui)	500 V	600 V
Rated Thermal Current (Ith)	10 A	
Contact Resistance	50 mΩ maximum initial (at 1 A 5 Vdc)	
Insulation Resistance	100 MΩ minimum (at 500 Vdc)	
Ambient Temperature	+85° C	
Degree of Protection	IP66 (IEC 60529)	
Contact Block	Circuit Form Zb (IEC 60947-5-1) with double gap: NO and NC contacts can be independent circuit	
	With positive opening operation on NC Contact (IEC 60974-5-1): When the foot switch is totally actuated	
Mechanical Life	10.000.000 cycles	
Electrical Life	50.000 cycles	
Materials	Housing:	Molded and painted zamak
	Actuator:	Thermoplastic
	Cover	Painted Steel
	Protection Cover:	Painted Steel

Subject to change without prior notice

Dimensions



Foot Switch
SK1



Foot Switch with Protection Cover
SK1C

Ordering Information

SK1C

Series

Actuator

1 Actuator = 1

Protection Cover

without Protection = none
with Protection = C

After consults we can supply the double Foot Switch

Switch for Replacement
VFB5



Cable Gland
(See Catalog **ZA**)

