

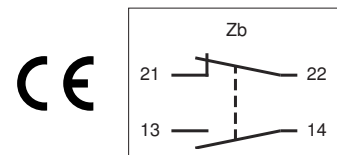
KP LE Series

Heavy Duty Position Switch

- General purpose thermoplastic housing switch
- 2 housing options: DIN EN 50041 and DIN EN 50047
- Degree of Protection IP67 (IEC 60529)
- Heads interchanging between the housings
- Positions of the actuators assembly from 90° to 90°
- Double Gap contacts
- Positive opening of the NC contact \rightarrow (IEC 60947-5-1)
- Mechanical life expectancy up to 20 million operations
- Double insulated \square in plastic models
- In conformity with Low Voltage Directive 2006/95/EC
- UL approved product (File E131787 - models FP or FR)



Circuitry (IEC 60947-5-1)



Approval UL

Utilization Category	Q300 (69 VA, 125...250 Vcc)
	A600 (720 VA, 120...600 Vac)
Enclosure Type	1, 4X "indoor use only", 12, 13

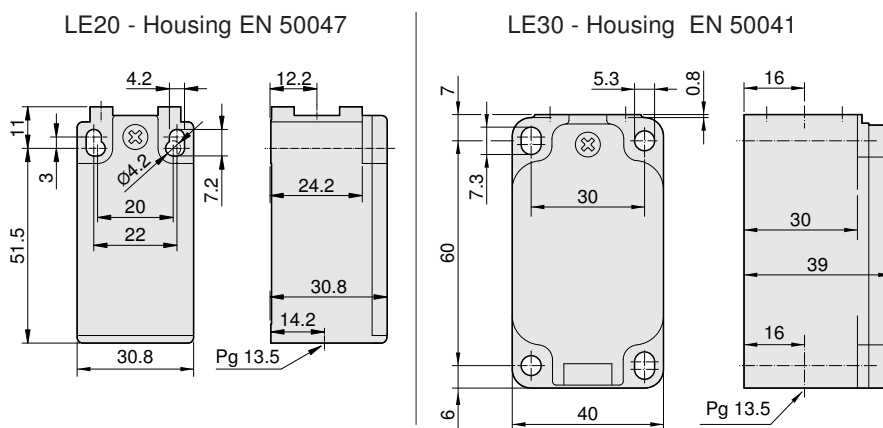


Specifications

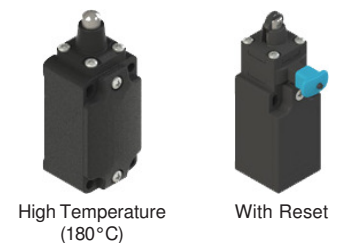
Utilization Category (IEC 60947-5-1)	AC-15	DC-13
Rated Operational Voltage (Ue)	400 V	125 V
Rated Operational Current (Ie)	3 A	1,1A
Rated Insulation Voltage (Ui)	500 Vac	600 Vdc
Conventional free air thermal current (Ith)	10 A	
Contact Resistance	50 mΩ maximum initial (at 1 A 5 Vdc)	
Ambient Temperature	+80° C maximum	
Degree of Protection	IP67 (IEC 60529) (with IP67 cable gland mounted)	
Internal Switch	Circuit Form Zb (IEC 60947-5-1) with double gap: NO and NC contacts can be electrically insulated	
	With positive opening operation of the NC contact (IEC 60947-5-1): obtained by the minimum course (\rightarrow) described in the diagrams	
Mechanical Life Expectancy	20.000.000 cycles at 60 cycles/min max.	
Materials	Enclosure: Glass-reinforced polymer	
	Heads: Glass-reinforced polymer	

Subject to change without prior notice

Housings



Options



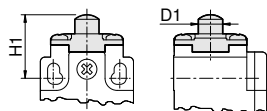
Accessories



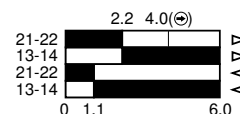
Heads (Dimensions in mm)

Course Diagram

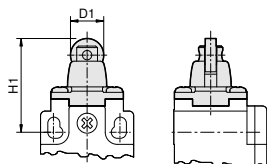
Plunger Head (type B)



Code	H1	D1
LE20B	21.4	ø8
LE30B	24	ø10



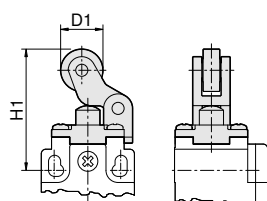
Roller Plunger Head (type S)



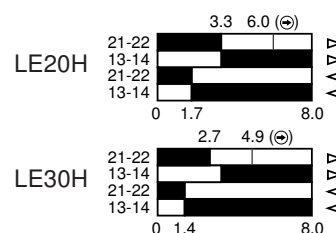
Code	H1	D1
LE20S	31	ø11x3.6
LE30S	50	ø13x4



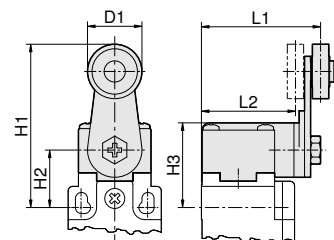
Plunger Head with Horizontal Lever and Roller (type H)



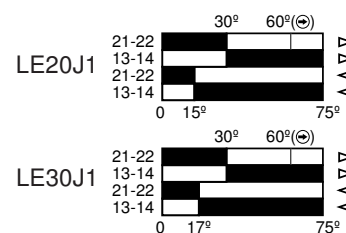
Code	H1	D1
LE20H	40.1	ø14x5.5
LE30H	52	ø20x7



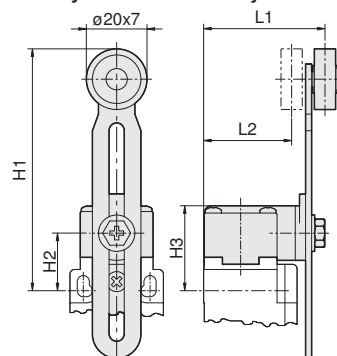
Rotary Head with Lever and Roller (type J1)



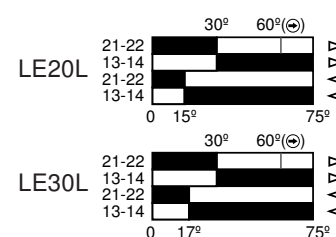
Code	H1	H2	H3	L1	L2	D1
LE20J1	54	19	28	39.4	31.1	ø18x5.4
LE30J1	62	22	31	56.5	37.5	ø20x7



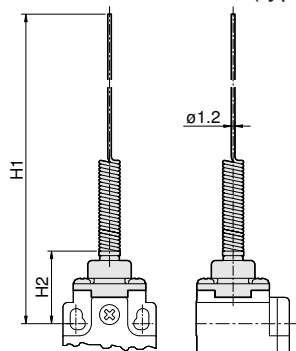
Rotary Head with Adjustable Lever and Roller (type L)



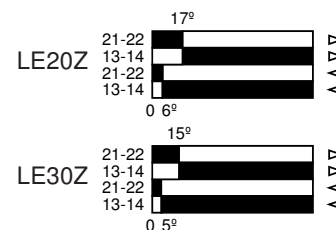
Code	H1	H2	H3	L1	L2
LE20L	53 a 112	19	28	40	29
LE30L	56 a 115	22	31	52.5	41.5



Multidirectional Head (type Z)



Code	H1	H2
LE20Z	141	24
LE30Z	135	18.5



Subject to change without prior notice