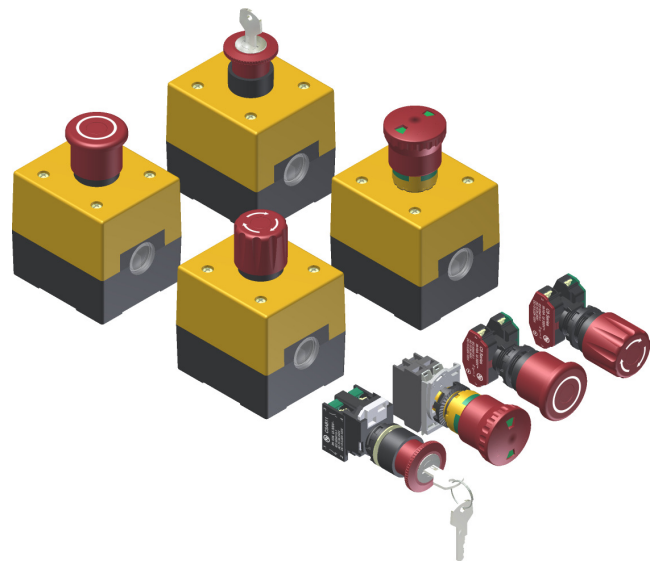




Emergency Pushbuttons and C5Q Series Enclosure

- Emergency pushbuttons for low voltage circuits
- Thermoplastic compact and sturdy construction
- Round bezel for $\varnothing 22\text{mm}$ holes
- 1NO + 1NC or 2NC contacts
- Positive opening of the NC contact \rightarrow (IEC 60947-5-1)
- Screw terminals with retractable clamps
- Pushbutton enclosure with or without emergency push button assembled
- Various types of locks and visual signaling option
- Self-monitored contact block for critical applications



Specifications

Serie	C2, C5Q and C9		C7	
Utilization Category (IEC 60947-5-1)	AC-15	DC-13	AC-15	DC-13
Rated Operational Voltage (Ue)	240 V	125 V	250 V	125 V
Rated Operational Current (Ie)	3 A	0,22 A	6 A	0,6 A
Rated Insulation Voltage (Ui)	300 Vac		250 Vac/Vdc	
Rated Thermal Current (Ith)	10 A	1 A	10 A	
Ambient Temperature	+70 °C maximum		-25 °C ... +80 °C	
Contact Resistance	50 m Ω maximum initial (in 1 A 5 Vdc)			
Contact Type	Slow action with positive opening of the NC contact \rightarrow			
	Options: 1NO+1NC or 2NC			
Terminals	Screw terminals with retractable clamp, with insulating protection against electric shocks			
Wiring Cables	- Min.	1 x 0.32 mm ² (22 AWG)	1 x 0.32 mm ² (22 AWG)	
	- Max.	1 x 3.3 mm ² (12 AWG)	2 x 1.5 mm ² (16 AWG)	
Mechanical Life	200.000 cycles		300.000 cycles	
Electrical Life	200.000 cycles			
Degree of Protection (IEC 60529) ①	IP65		IP67	
Materials	Enclosure: Thermoplastic		Reinforced thermoplastic	
	Screws: Zinc plated steel			

Subject to change without prior notice

① When assembled with emergency pushbutton and cable gland of equal or greater degree of protection. Enclosures pushbutton are provided without cable gland.

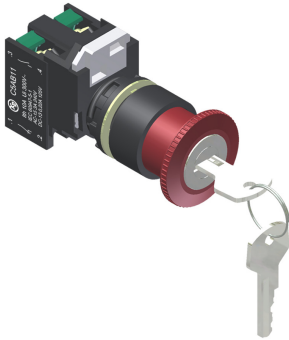




Emergency Pushbuttons and C5Q Series Enclosure

C2 and C9 - Emergency Pushbutton

C2 - With Key



Push button type mushroom head, latching function, without spring return.

To unlock is necessary turn the key from left to right.

The output key only occur in the left position. The key is supplied with standard secret, even so, we can supply with specific secret.



Unlock



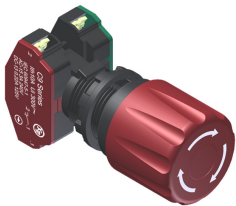
Output Key

Circuitry

1NO+1NC(→) 2NC(→)

C2EY11 C2EY02

C9 - Push/Turn



Emergency pushbutton type Emergency with lock and without spring return.

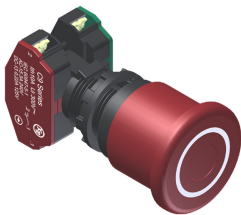
To unlock it is necessary turn the button in the direction indicated by arrow.

Circuitry

1NO+1NC(→) 2NC(→)

C9EK11 C9EK02

C9 - Push/Pull



Emergency pushbutton with lock and without spring return.

To unlock it is necessary pull the button.

Circuitry

11NO+1NC(→) 2NC(→)

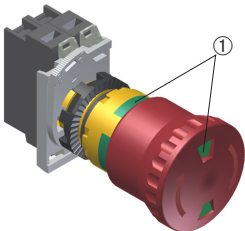
C9EW11 C9EW02

Subject to change without prior notice

C7 - Emergency Pushbutton with Self-Monitored Contact Block



C7 - Push/Turn



Emergency pushbutton type Emergency with lock and without spring return.

To unlock it is necessary turn the button in the direction indicated by arrow.

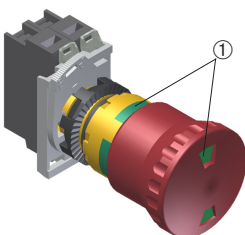
In addition to the contacts listed beside, these buttons have a 2NC contact block, self-monitored, in the central position and with positive opening of the NC contact (IEC 60947-5-1) ②.

Circuitry

1NO+1NC(→) 2NC(→)

C7EK11M C7EK02M

C7 - Push/Pull



Emergency pushbutton with lock and without spring return.

To unlock it is necessary pull the button.

In addition to the contacts listed beside, these buttons have a 2NC contact block, self-monitored, in the central position and with positive opening of the NC contact (IEC 60947-5-1) ②.

Circuitry

1NO+1NC(→) 2NC(→)

C7EW11M C7EW02M

① The green signaling indicates that the button is not operated. When the button is operated, the back green indication (in the yellow body) is hidden and the front green indicator (in the red button) turns red.

② Block applicable for monitoring the efficiency of the mechanical connection between the operator and the contact blocks. If this union is not appropriate, or the operator has been disassembled the contact blocks, the self monitoring block (when connected correctly) prevents operation of the equipment to which the emergency button is associated.



KAP COMPONENTES ELÉTRICOS Ltda.

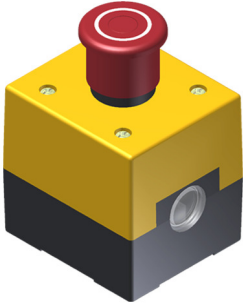


Emergency Pushbuttons and C5Q Series Enclosure

C5Q - Enclosures with Emergency Pushbuttons

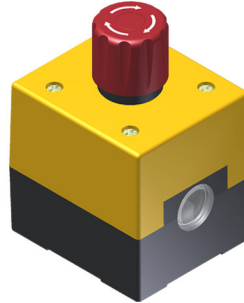
C5QE1A001

- C9 Emergency pushbutton
- Push/Pull
- 2NC contact



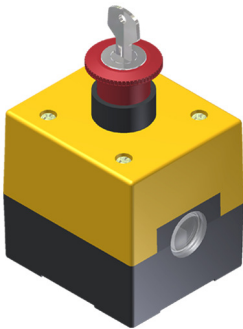
C5QE1A002

- C9 Emergency pushbutton
- Push/Turn
- 2NC contact



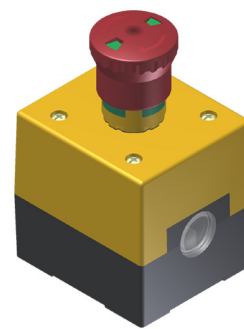
C5QE1A003

- C2 Emergency pushbutton
- With Key
- 2NC contact



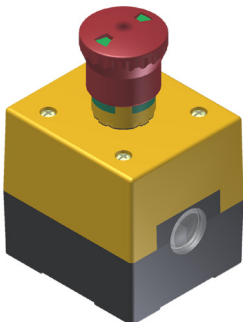
C5QE1A005

- C7 Emergency pushbutton
- Push/Turn
- 2NC contact



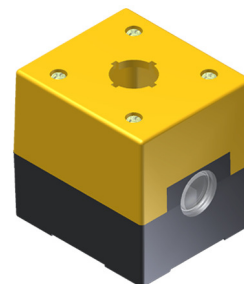
C5QE1A006

- C7 Emergency pushbutton
- Push/Pull
- 2NC contact



C5QE1A

- Separate Enclosure



Subject to change without prior notice



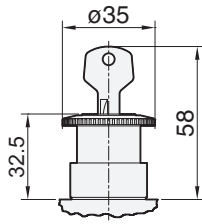
KAP COMPONENTES ELÉTRICOS Ltda.



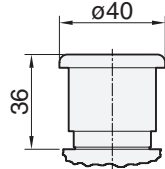
Emergency Pushbuttons and C5Q Series Enclosure

Dimensions (in mm)

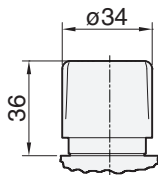
Operator C2, C7 and C9



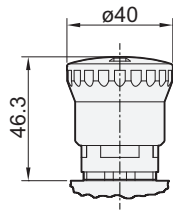
C2 - with Key



C9 - Push/Pull

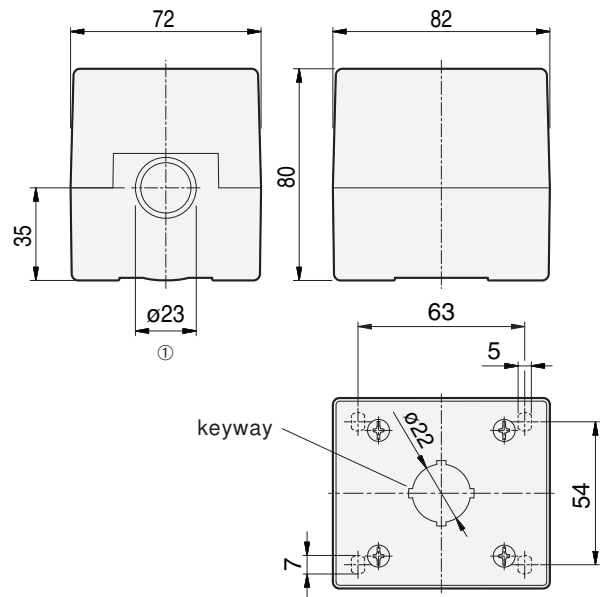


C9 - Push/Turn



C7 - Push/Pull/
Turn

Enclosure C5Q



① Enclosure with hole protected by hole cap

Accessories ①



C5AX
Tapping
tool



C5AQE e C9AQE ②
Legend plate



C5AEE ③
Protective Cover



C9AR ④
Position
washer

- ① The choice of the accessory code is related to the operator used. Contact us.
- ② Legend plate without stamp. Contact us about options of stamped plates and plates with other colors.
- ③ Applicable for emergency pushbuttons when used in programmed stop. Not applicable when used in emergency stop. In these cases the pushbutton must be kept unobstructed.
- ④ Used to lock the rotation of the C9 operators when assembled in holes with keyway. Applying between the panel and the nut.

Special Applications

In addition to the products presented in this catalog, we can develop "personalized" models for special applications. Contact us.



KAP COMPONENTES ELÉTRICOS Ltda.